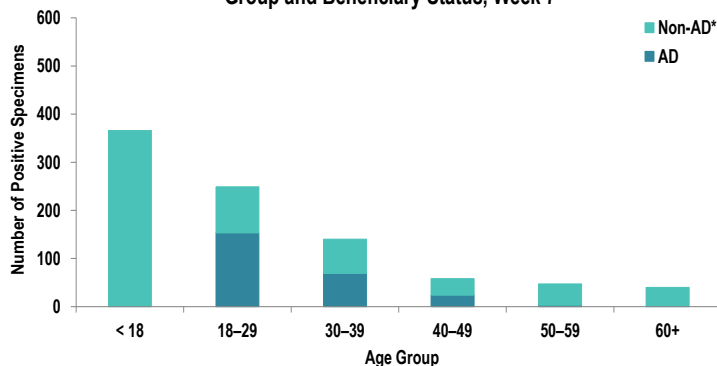


SUMMARY

Influenza activity in the Army population slightly decreased from Week 6 to Week 7, and RSV activity continues to decrease. Five influenza-associated hospitalizations were reported during surveillance Week 7, and the number of influenza-associated hospitalizations have been decreasing for the past few weeks. Nationwide, influenza activity remains elevated, with 14.2% of specimens tested by clinical laboratories being positive for influenza A or B, according to the Centers for Disease Control and Prevention (CDC). As a reminder, seasonal influenza spreads rapidly and easily. Getting vaccinated is the best way to prevent exposure and further spread of influenza.

DEMOGRAPHICS

Positive Respiratory Specimen Results from Army MTFs by Age Group and Beneficiary Status, Week 7



AD: Two hundred and forty-nine positive respiratory specimens were collected from active duty (AD) service members (SMs) during Week 7; 61.4% (n=153) of the positive specimens were collected from SMs 18 – 29 years of age.

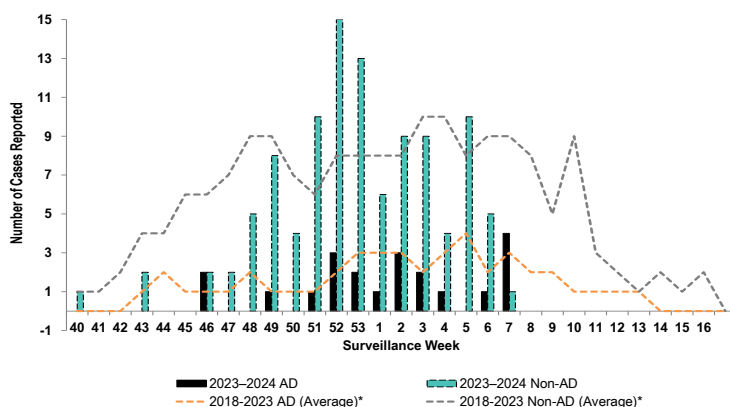
Non-AD: Six hundred and fifty-one positive respiratory specimens were collected from non-AD individuals during Week 7; 56.2% (n=366) of the positive specimens were collected from individuals under 18 years of age and 14.7% (n=96) from individuals who are 18 – 29 years old.

*Non-AD=All individuals that are not active duty service members.

The age and beneficiary status of some cases were not available. Therefore, all calculations involving these variables were conducted using only available data. Differences in total results, and age- and beneficiary status-specific results may be noted throughout the report.

INFLUENZA-ASSOCIATED HOSPITALIZATIONS

Army Influenza-Associated Hospitalizations Reported in DRSi by Onset Week



Five influenza-associated hospitalizations with an onset date in Week 7 were reported to the Disease Reporting System internet (DRSi). The season total thus far is 127 hospitalizations. The Week 7 average during the 2018 – 2023 seasons was 11 hospitalizations (with an average of 159 hospitalizations reported from the start of the season through Week 7).

The DRSi does not capture cases older than 65 years old for influenza-associated hospitalizations.

*Data from the 2020–2021 and 2021–2022 influenza seasons are not included in comparison calculations due to the unusually low incidence of influenza.

Data are preliminary and subject to change.

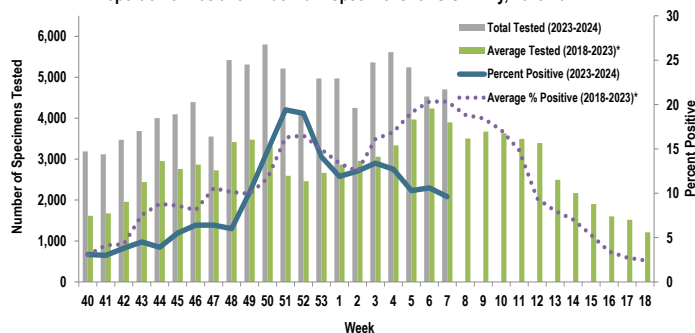
Disclaimer: The mention of any non-federal entity and/or its products is for informational purposes only, and not to be construed or interpreted, in any manner, as federal endorsement of that non-federal entity or its products.

Questions?
Email DCPH-A-DEP

INFLUENZA A ACTIVITY - ARMY

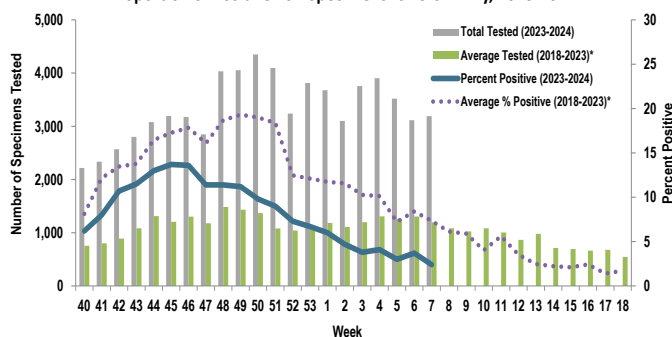
RSV ACTIVITY - ARMY

Proportion of Positive Influenza A Specimens for U.S. Army, 2023-2024



Of the 4,703 specimens tested for influenza A during Week 7, 9.6% (n=452) were positive. This is a slight decrease from Week 6 (10.6%).

Proportion of Positive RSV Specimens for U.S. Army, 2023-2024



Of the 3,190 specimens tested for RSV during Week 7, 2.4% (n=76) were positive. RSV activity continues to decrease.

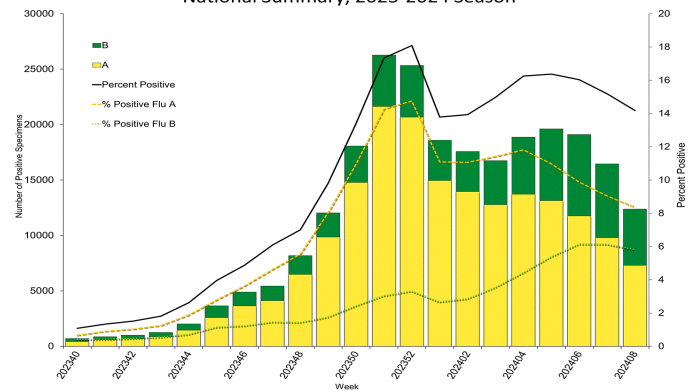
*Data from the 2020-2021 and 2021-2022 influenza seasons are not included in comparison calculations due to the unusually low incidence of influenza.

		Week 4	Week 5	Week 6	Week 7	Season Total
Army MTF Laboratory Results, 2023-24	Adenovirus	8	13	16	14	264
	Enterovirus	40	53	55	39	949
	Influenza A	715	541	479	452	9,625
	Influenza B	421	349	326	304	3,773
	Parainfluenza	14	6	21	16	246
	RSV	159	106	115	76	5,680
	Negative	4,311	4,246	3,584	3,864	75,725
	Total	5,668	5,314	4,596	4,765	96,262

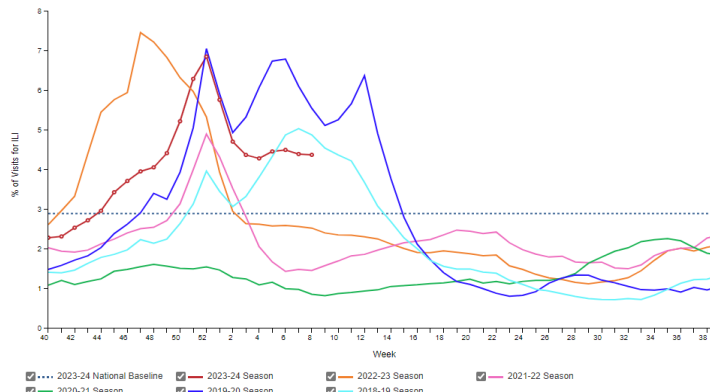
Of the 4,765 specimens tested during Week 7, 18.9% (n=901) were positive for any type of respiratory illness. Influenza A accounted for 50.2% (n=452) of the positive results, influenza B accounted for 33.7% (n=304), RSV accounted for 8.4% (n=76), enterovirus accounted for 4.3% (n=39), parainfluenza accounted for 1.8% (n=16) and adenovirus accounted for 1.6% (n=14). Additionally, the reported number of specimens tested increased 3.7% from Week 6 to Week 7. Significantly more tests for influenza have been conducted this season compared to past seasons; 95,024 specimens have been tested for influenza A so far this season compared to the average of 61,237 specimens during the same time period in 2018-2023*.

INFLUENZA-LIKE ILLNESS (ILI) ACTIVITY - UNITED STATES

Influenza Positive Tests Reported to CDC by U.S. Clinical Laboratories, National Summary, 2023-2024 Season



Percentage of Outpatient Visits for Respiratory Illness Reported by The U.S. Outpatient Influenza-like Illness Surveillance Network (ILINet), Weekly National Summary, 2023-24 Season and Selected Previous Seasons

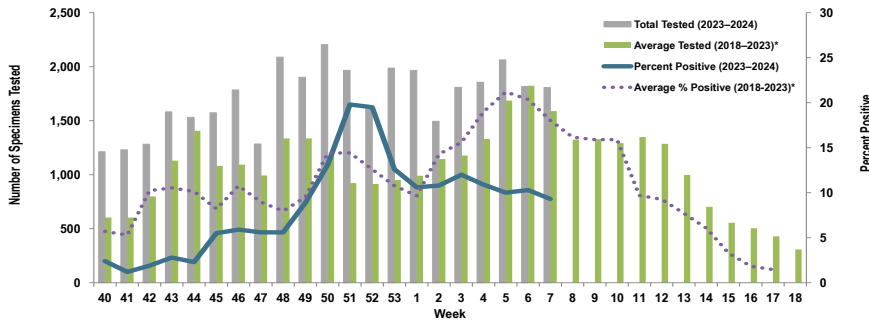


Nationwide in Week 7 (CDC's Week 8), incident ILI activity was 4.4%; this is above the national baseline of 2.9%. Additionally, a total of 87,299 specimens were tested for influenza by select clinical laboratories and submitted to the CDC; 12,376 (14.2%) were positive. Influenza A accounted for 59.0% (n=7,298) of the total positive specimens.

Locations providing Week 7 laboratory data as of 28 February 2024: Camp Zama, Carlisle Barracks, Ft. Belvoir, Ft. Bliss, Ft. Campbell, Ft. Cavazos, Ft. Carson, Ft. Drum, Ft. Eisenhower, Ft. Eustis, Ft. Gregg-Adams, Ft. Huachuca, Ft. Irwin, Ft. Jackson, Ft. Johnson, Ft. Knox, Ft. Leavenworth, Ft. Leonard Wood, Ft. Lewis, Ft. Liberty, Ft. Meade, Ft. Moore, Ft. Novosel, Ft. Riley, Ft. Sam Houston, Ft. Sill, Ft. Stewart, Ft. Wainwright, Korea, Landstuhl Regional Medical Center, Redstone Arsenal, Tripler Army Medical Center, the U.S. Military Academy at West Point, and Walter Reed National Military Medical Center.

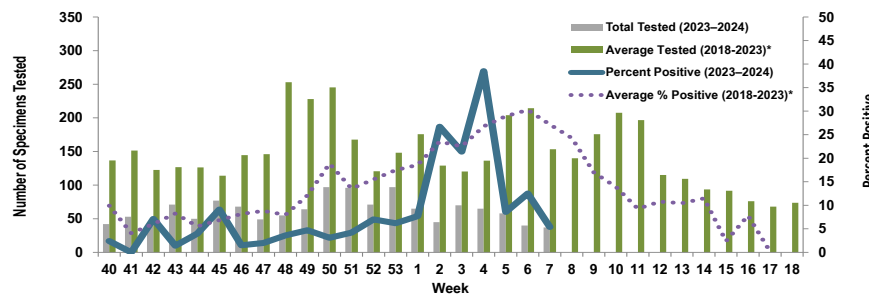
Proportion of Influenza A Positive Specimens by Week and Medical Readiness Command, 2023–2024 as Compared to 2018–2023*

Medical Readiness Command - East



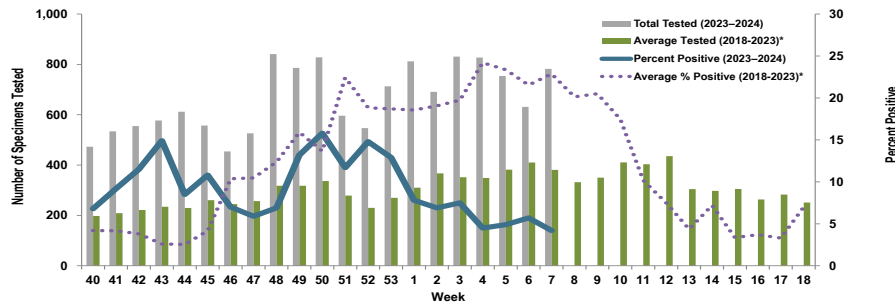
Week 7			
Age Group	AD	Non-AD	Season Total
< 18	0	41	1,151
18–29	48	13	691
30–39	20	9	521
40–49	2	7	356
50–59	1	13	274
60+	0	14	303
Total	71	97	3,296

Medical Readiness Command - Europe (Landstuhl Regional Medical Center)



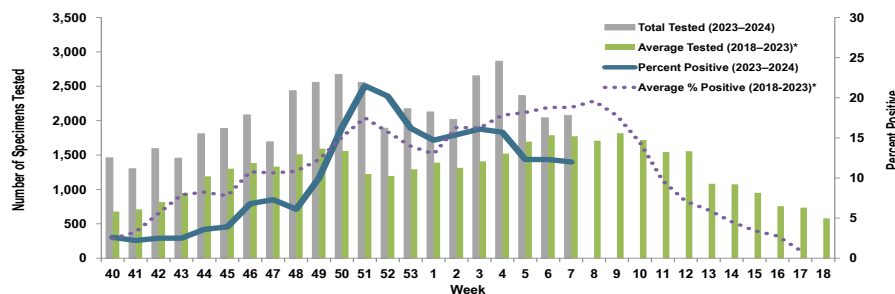
Week 7			
Age Group	AD	Non-AD	Season Total
< 18	0	1	40
18–29	0	0	21
30–39	0	1	18
40–49	0	0	16
50–59	0	0	8
60+	0	0	5
Total	0	2	108

Medical Readiness Command - Pacific



Week 7			
Age Group	AD	Non-AD	Season Total
< 18	0	9	341
18–29	6	3	420
30–39	4	2	243
40–49	3	0	100
50–59	0	3	54
60+	0	3	99
Total	13	20	1,257

Medical Readiness Command - West



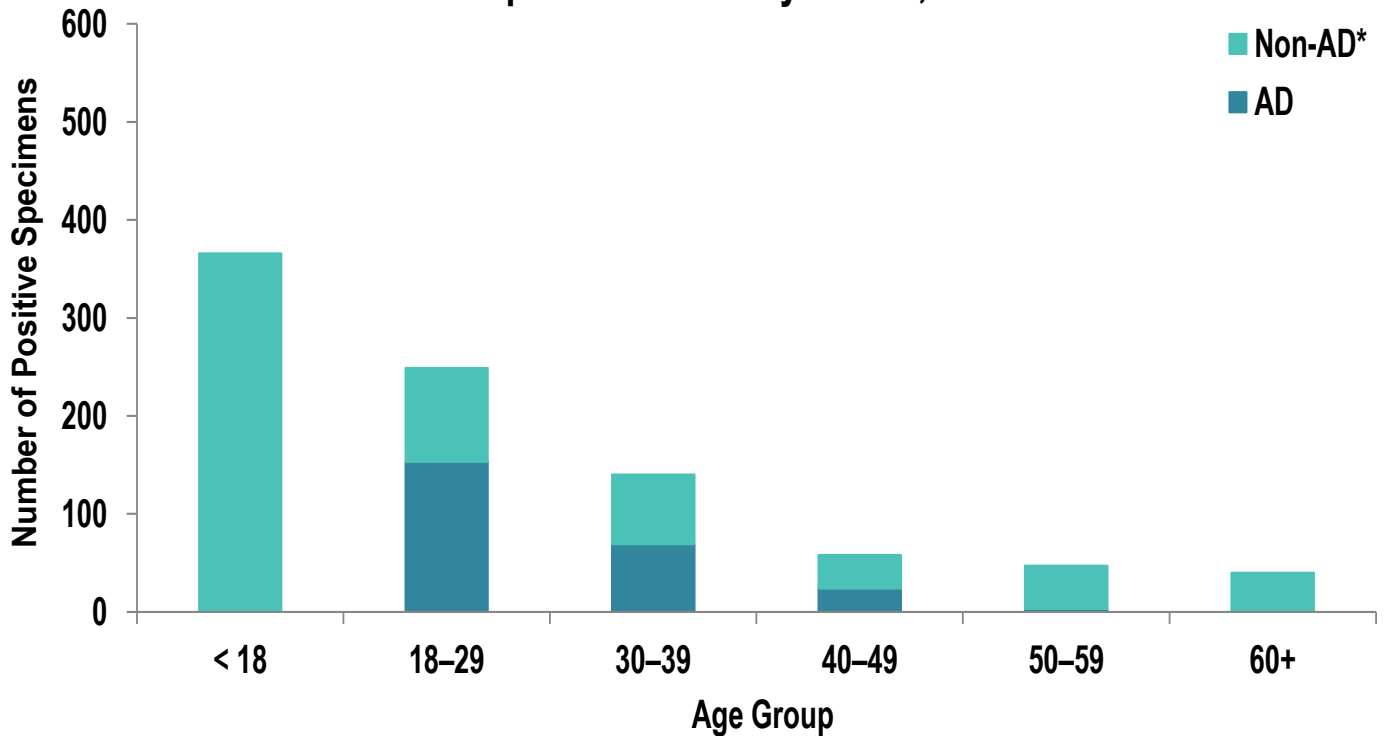
Week 7			
Age Group	AD	Non-AD	Season Total
< 18	0	51	1,764
18–29	52	60	1,235
30–39	16	29	783
40–49	8	11	452
50–59	1	12	336
60+	0	9	389
Total	77	172	4,959

*2018–2019, 2019–2020, and 2022–2023 influenza seasons. Data from the 2020–2021 and 2021–2022 influenza seasons are not included in comparison calculations due to the unusually low incidence of influenza.

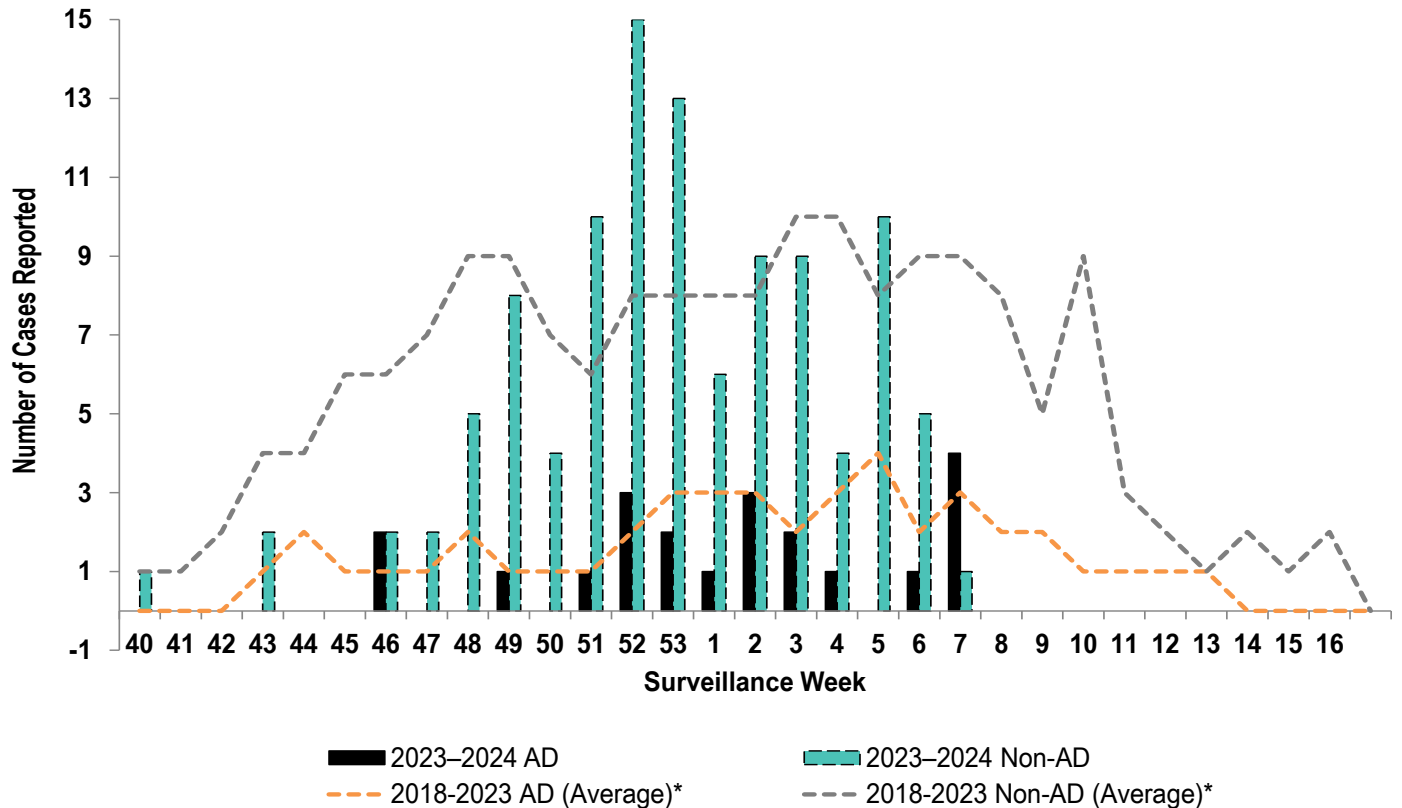
Number of Positive Influenza A Specimens by Region and Duty Status

Region	Week 4		Week 5		Week 6		Week 7	
	AD	Non-AD	AD	Non-AD	AD	Non-AD	AD	Non-AD
MRC-East	77	125	69	138	63	125	71	97
MRC-Europe	4	21	1	4	2	3	0	2
MRC-Pacific	15	22	11	26	15	21	13	20
MRC-West	128	323	74	218	52	198	77	172

Positive Respiratory Specimen Results from Army MTFs by Age Group and Beneficiary Status, Week 7

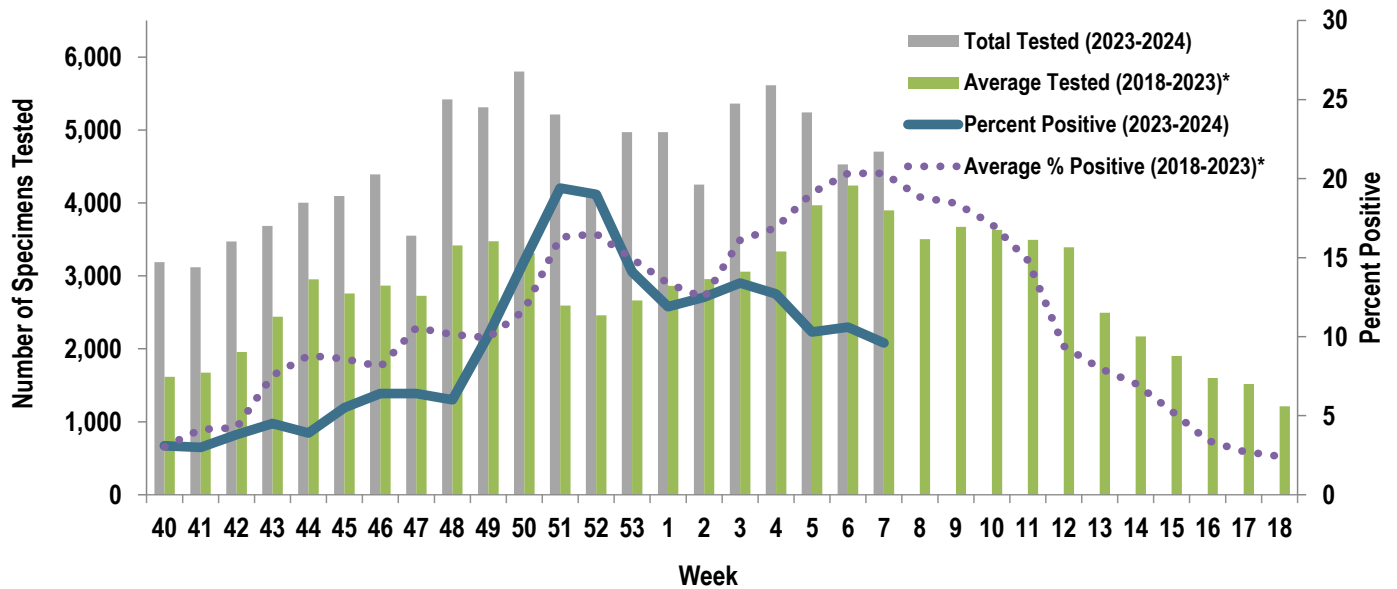


Army Influenza-Associated Hospitalizations Reported in DRSi by Onset Week



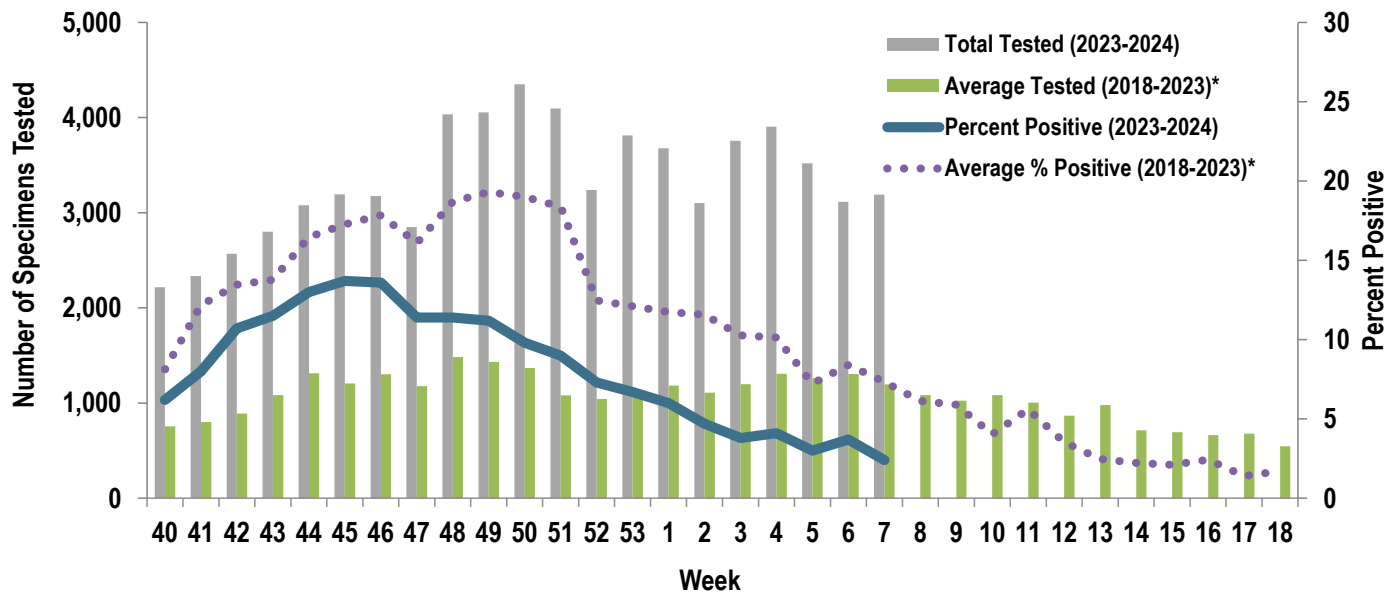
*2018-2019, 2019-2020, and 2022-2023 influenza seasons. Data from the 2020-2021 and 2021-2022 influenza seasons are not included in comparison calculations due to the unusually low incidence of influenza.

Proportion of Positive Influenza A Specimens for U.S. Army, 2023-2024



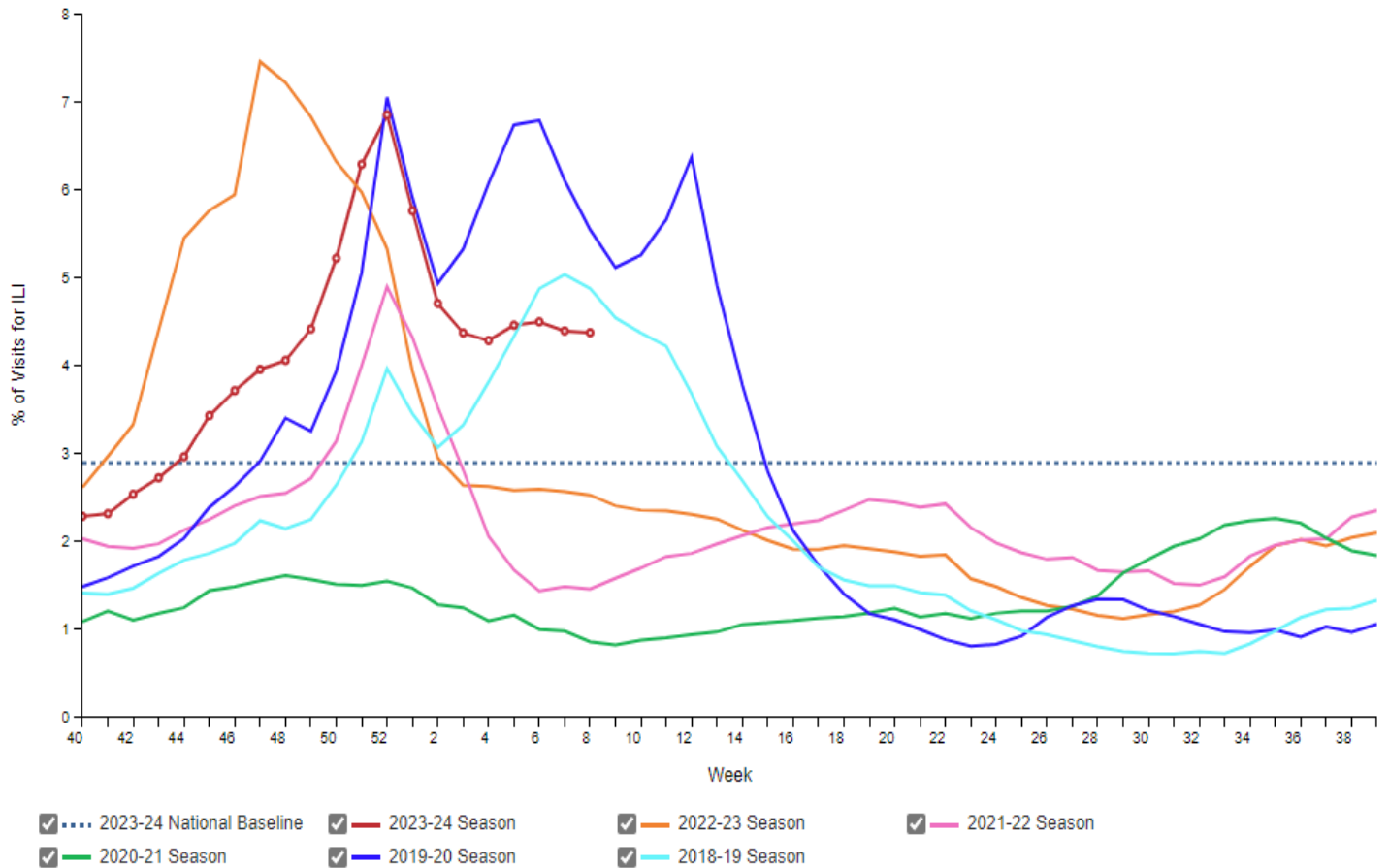
*2018–2019, 2019–2020, and 2022–2023 influenza seasons. Data from the 2020–2021 and 2021–2022 influenza seasons are not included in comparison calculations due to the unusually low incidence of influenza.

Proportion of Positive RSV Specimens for U.S. Army, 2023-2024



*2018–2019, 2019–2020, and 2022–2023 influenza seasons. Data from the 2020–2021 and 2021–2022 influenza seasons are not included in comparison calculations due to the unusually low incidence of influenza.

Percentage of Outpatient Visits for Respiratory Illness Reported by The U.S. Outpatient Influenza-like Illness Surveillance Network (ILINet), Weekly National Summary, 2023-24 Season and Selected Previous Seasons



Influenza Positive Tests Reported to CDC by U.S. Clinical Laboratories, National Summary, 2023-2024 Season

